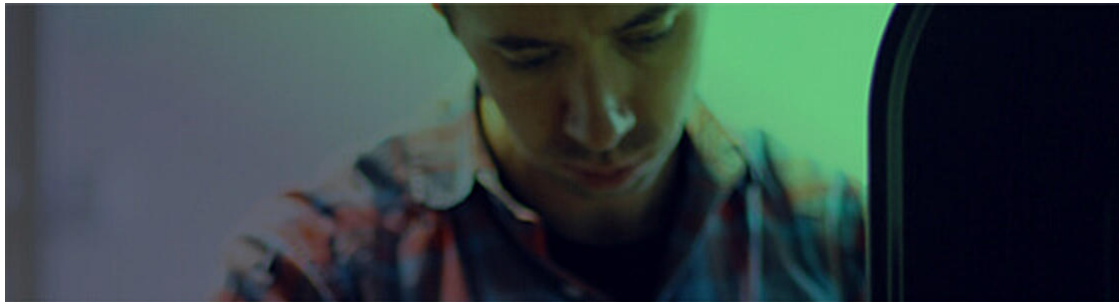


[View in browser](#)[MANUALS](#) [GUIDES](#) [EVENTS](#)

SOFTWARE UPDATES | NOVEMBER 2020

APPLICATION	VERSION
SAACR_Raw2Data	5.19
SAARecorder	7.90
SAAView	3.01
SAACR_FileGenerator	3.31
SAACR_DataChecker	1.43

Listed above are the most recent versions of our software. Please click [here](#) to update.

UPDATES INCLUDE:

SAACR_Raw2Data:

Features/Improvements:

- ShapeArrays can now be selected to be installed in a railway application. This applies special filtering to account for the sensor noise introduced into the measurements by nearby trains. We updated the "vert" field to "installation" in the Raw2Data settings window to allow a choice between vertical, horizontal, or rail installations.
- Improved data processing by automatically filtering out bad sensor values. This change causes any reading with two or more segments that are returning zero to be removed from the processing.

Fixes:

- Fixed an issue that caused some super arrays without any overlaps to not convert correctly.
- Fixed an issue that caused the automatic application of Bias Shift to be forgotten and unable to be turned off after processing the data when nothing new was added in some cases.
- Fixed an issue that caused model 1 and 2 ShapeArray data to be reconverted as a reset conversion in some instances if the date of the logger was set in the future.
- Fixed the message box when attempting to manually add a diagnostics file to the project for conversion to display the message and the title correctly.
- Fixed an issue that prevented a site file from being properly removed from a conversion project.
- The processing log file will now specify which legacy format was used for export.
- Updated the application to no longer create the legacy setup_file.txt file which prevented the application from adding new files to the project if a new ShapeArray was added to a logger.
- The list of selected times, when working with a project with more than 13 Arrays will now display a scroll bar to see the rest of the arrays in the list on the right.
- Raw2Data window showed wrong version.
- Static acceleration adjustment check box is separated from the list of other adjustments.

SAARecorder:

Features/Improvements:

N/A

Fixes:

- Made the message to inform the user that a ShapeArray calibration file is needed to view numeric data shorter and more concise.
 - Fixed issue with Z-axis data not being included in text snapshot files for far-referenced Super ShapeArrays.
 - Added support for Portable Diagnostic Unit. Improved Bluetooth operation for start up of SAARecorder.
 - Fixed issues with exporting .RSA files to SAAView with one or more unresponsive segments.
-

SAAView:**Features/Improvements:**

N/A

Fixes:

- Fixed a view limit issue for vertical, up-side down ShapeArrays on first conversion.
- Fixed issue with filter function graph not properly removing sample points in some cases.
- Adjusted vertical axis number labels for the incremental rotation graph to be the same as the tilt magnitude and incremental rotation per segment graphs for anti-rotation diagnostics.
- Fixed display of numeric data when dragging elevation sliders for vertical data.
- Cosmetic: Updated the animation/tutorial window to expand some abbreviations.
- View limits are now working correctly again.

- Fixed an issue that showed scientific notation for large numbers of deformation while maintaining the unit of measure. Instead SAAView now changes the unit of measure to keep the numeric value small.
 - Fixed an issue where the unit system selected (imperial vs metric) was incorrectly applied to the alarm thresholds.
 - Changed to use two digits of decimal precision for alarm limits in the alarm settings table.
 - The user is now warned if he/she sets the view limit for either end of the ShapeArray.
-

FileGenerator:

Features/Improvements:

NA

Fixes:

- SAAPZ functionality has been removed.
 - Removed the about dialog from FileGenerator.
-

DataChecker

Features/Improvements:

- Updated the conditions for the Filter Bad/Invalid Data option to match the conditions used in Raw2Data that will allow a single reading with a sensor that has an invalid reading to be retained, any other sensors that are returning invalid readings will cause the reading to be removed.
- Records containing one or more segments that contain a low value for any axis are removed from the data file.
- Records containing only one sensor that contains a low value for any axis are left in the data file.

Fixes:

- Corrected a problem with model 1 and model 2 data when displaying the Raw Data Sample Window when segments are missing from the last octet.
- Fixed an issue that caused the display of raw sensor temperature data instead of a temperature reading in degrees Celsius/Fahrenheit.
- Fixed an issue that allowed the temperature range minimum to be larger than the temperature range maximum.
- Fixed an issue that allowed the creation of an empty data file if no viewable data was left after filtering.
- Fixed a problem that caused the application to prematurely exit when loading a large data file and opening a second file before the process has completed.
- Updated the segment number list for ShapeArrays with magnetometers to display. Changed the display criteria for how many segment labels are shown on the screen at the same time.
- Made a change to the Raw Data Sample window so that it no longer shows data that is not selected to display on the graph.
- Unhandled exception when opening DAT files with no data.

HAVE SOFTWARE FEEDBACK FOR US?

Let us know what you think! We would love to hear from you about your experience with our software.

[GET IN TOUCH](#)

[MANUALS](#) [GUIDES](#) [EVENTS](#)

[in LinkedIn](#) [YouTube](#) [Website](#)

Measurand Instruments Inc., 2111 Hanwell Rd., Fredericton, New Brunswick E3C 1M7, Canada,
(506) 462-9119

[Unsubscribe](#) [Manage preferences](#)