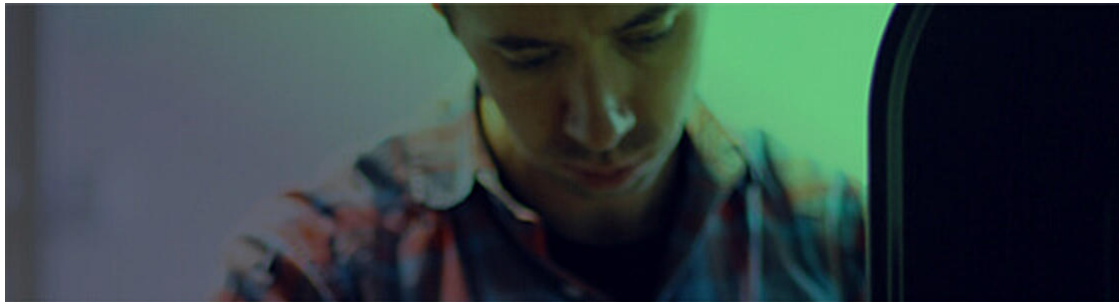


[View in browser](#)[MANUALS](#) [GUIDES](#) [EVENTS](#)

SOFTWARE UPDATES | Volume 1, 2021

APPLICATION	VERSION
SAACR_Raw2Data	5.20
SAARRecorder	7.91
ShapeArray™ Viewer	3.02
SAACR_FileGenerator	3.32
SAACR_DataChecker	1.44

Listed above are the most recent versions of our software. Please click [here](#) to update.

UPDATES INCLUDE:

SAACR_Raw2Data:

Features/Improvements:

- Added support for SAAV Extend data files
 - Raw2Data will process a ShapeArray with a lift with a correct site file.

- The output files will list the ShapeArrays in the specified order.
- The output matlab file will contain the new fields for ShapeArray™ Viewer.
- The process will create SAALift calibration files for each lift found in the site file.
- The application will show the user the message when ShapeArray Data .dat files are found but do not exist within the project.
- The application will add the new files to the end of the list of files in the File Selection window.
- Adjustments applied to base ShapeArray are automatically applied to the lifted ShapeArrays.

Fixes:

- Fixed an issue that prevented super arrays from processing during an auto conversion.
- Fixed an issue that prevented some data files saved by Worldsensing loggers from converting properly.
- Fixed an issue that removed ShapeArray readings, which only had zero readings for segments that were designated as slaved or absent. These readings are now kept.
- Fixed an issue that prevented convergence ShapeArrays from processing if the data file was 0s.

SAAREcorder:**Features/Improvements:**

- Added support for SAAV Extend ShapeArrays
 - When using a .dat file for installation verification, the user is prompted for a site file if the found calibration file is part of an extended ShapeArray.
 - New Menu item SAA Setup → Create "Lifted Site File"
 - The menu option is unavailable when a connectable ShapeArray is not being used.
 - An existing site file found with the same filename in the chosen directory will be updated to include the connectable ShapeArray.

- User is prompted to a file location for the "Lifted Site File" as soon as one is detected while starting SAARRecorder.

Fixes:

- Fixed a crash that would occur if the wireless delay value on the 'Connection' tab page was changed to an incorrect value.
- Fixed an issue with saving text data from SAAV Installation Verification tool not giving tilts that were consistent with the graphical tilts in some cases.
- Made the voltage/current dialogue available from the ShapeAccelArray Startup window more consistent with the voltage/current dialogue available from the diagnostics section of SAARRecorder.
- Removed legacy applications from the installation of SAARRecorder
 - ReadAntiRotationAngles
 - RSAFileChecker
 - SAA_Concat
 - SAACConcatHoriz
 - SoloBug_SAARRecorder
- Changed the references to octets when searching for newer model ShapeArrays over a Bluetooth connection.
- Fixed an issue that prevented some customers from being able to transfer a ShapeArray into low power mode using an older 232/FPU interface.
- Fixed an issue with calibration file sometimes not getting updated correctly for a convergence ShapeArray, when data is converted using Raw2data.
- Modified to power down interface power to ShapeArray (if supported by the interface) when an error occurs in the communications diagnostics test.
- Updated the popup message if there was a problem connecting to a Bluetooth device.
- Fixed an issue that would cause the COM port checkboxes on the 'Connection' tab to remain active when in wireless mode.
- Changed the title of the 'Using Serial-to-Ethernet Converter' checkbox on the 'ShapeAccelArray Startup' window to 'Wireless'.
- Fixed search and basic test functions for ShapeArrays in low power mode.
- A message about transitioning into AIA mode is displayed if a low power ShapeArray is being used when the 'Quick Save / RECORD DATA' button is pressed.
- Fixed an issue that prevented convergence ShapeArrays from processing if the data file was 0s.

ShapeArray™ Viewer:

Features/Improvements:

- Changed the name of the application from SAAView to ShapeArray™ Viewer.
- Updated the application to support SAAV Extend ShapeArrays.
 - Added a new temporary adjustment to preview the cumulative displacement of each ShapeArray after a lift has been applied by using the previous shape as an offset.
 - SAAV Extend ShapeArrays indicate how many lifts they have in the main window.

Fixes:

- Changed the azimuth graph to set the orange elevation selection line to be 15% from the top of the ShapeArray if that elevation line was previously saved below or above the range of available ShapeArray elevation data.
-

FileGenerator:

Features/Improvements:

- Added support for SAAV Extend ShapeArrays
 - FileGenerator now has an option to load a "Lifted Site File" to get all of the serial numbers in the SAAV Extend ShapeArray.
 - Extended ShapeArrays will now be saved to new raw data files after each lift.

Fixes:

N/A

DataChecker:

Features/Improvements:

- Added the ability to open a data file that was captured with a lifted SAAV Extend ShapeArray.

Fixes:

- Fixed an issue that would require users to save changes made to files that were no longer opened in the application.
- Fixed an issue that caused the Raw Data window to show incorrect temperatures for newer SAAV ShapeArrays.
- Fixed an issue that would sometimes hide single low readings in data sets with lots of data.

HAVE SOFTWARE FEEDBACK FOR US?

Let us know what you think! We would love to hear from you about your experience with our software.

[GET IN TOUCH](#)

MANUALS GUIDES EVENTS

[in LinkedIn](#) [YouTube](#) [Website](#)

Measurand Instruments Inc., 2111 Route 640, Hanwell, New Brunswick E3C 1M7, Canada, (506) 462-9119

[Unsubscribe](#) [Manage preferences](#)